

2018-2019 ANNUAL REPORT

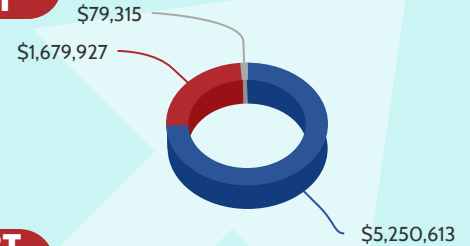
FINANCES

FUNDS RECEIVED

Public		Private	
Head Start	\$6,401,814	WSU	\$45,179
CSBG	\$225,613	Arrive Utah	\$76,349
TANF II	\$299,425	Yardi Systems	\$15,000
VITA	\$16,479	Donations	\$13,677
USDA	\$238,375	Misc.	\$12,917
		Non-Federal Share	\$1,643,149

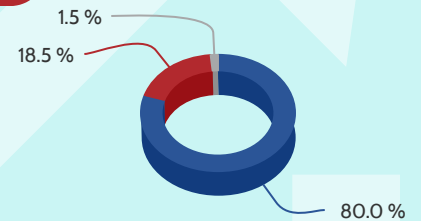
2018-2019 PROPOSED HEAD START BUDGET

■ Salary & Fringe
■ Operations
■ Training & Technical Assistance



FY 2019 HEAD START EXPENDITURES

■ Salaries & Fringe
■ Operations
■ Training & Technical Assistance



FY 2019 FINANCIAL AUDIT

There were zero findings on the FY 2019 Financial Statements Audit. Scan the QR Code to review the full audit.



COMMUNITY DATA

Demographics

- 15.8% of Weber County children under the age of five are living in poverty.
- 19,739 Head Start eligible infants, toddlers, preschool age children, and expectant mothers live in Weber County.
- 13.7% of individuals in the County speak a language other than English in the home.
- 9% of families in Weber County experienced homelessness.

Disabilities

- 957 Children had an IEP or IFSP
- Common disabilities include Speech, Developmental Delay, Autism, Deafness, and Visual Impairment
- LEA's and the Utah School for the Deaf and Blind provide testing and Services in Weber County.

Socio-Economic Needs

- Weber County is identified as an area with a significant Intergenerational Poverty (IGP) population. 37% of children experiencing IGP are at risk of remaining in poverty as adults.
- Weber County has a higher rate of teen pregnancy compared to both State and National trends.
- Weber County experienced an increase in homelessness transient rates
- The percentage of the population without a High School Diploma between the ages of 18-24 is 14.10% and 10.5% for those aged 25 and older.
- The poverty rate of individuals who are aged 25+ without High School Diploma was 34.90%.
- Weber County reported 29% of households rent. The average Renter Wage per hour is \$10.63. The wage needed to afford a 2-bedroom apartment is \$16.52.

Child Development Programs

Child development services programs for low income families, and the number of children served:

- OWCAP Head Start: 567
- OWCAP Early Head Start: 30
- Weber School District Special Education Preschool: 734
- Ogden School District Special Education Preschool: 223
- Weber School District Preschool: 140
- YMCA Preschool (Sliding Scale): 60
- Waterford Upstart: 500
- United Way Baby Your Baby - Home Based: 103
- Parents as Teachers - Home Based: 40
- Fee Based Child Care & Preschools: 57 Centers

Strengths

- Known access to a variety of outdoor recreation activities
- Diverse population
- Manufacturing, public administration, health care, and social assistance are the largest industry sectors
- Unemployment rate was 3.3% with job growth of 3.2%

Race & Ethnicity of Weber County Children

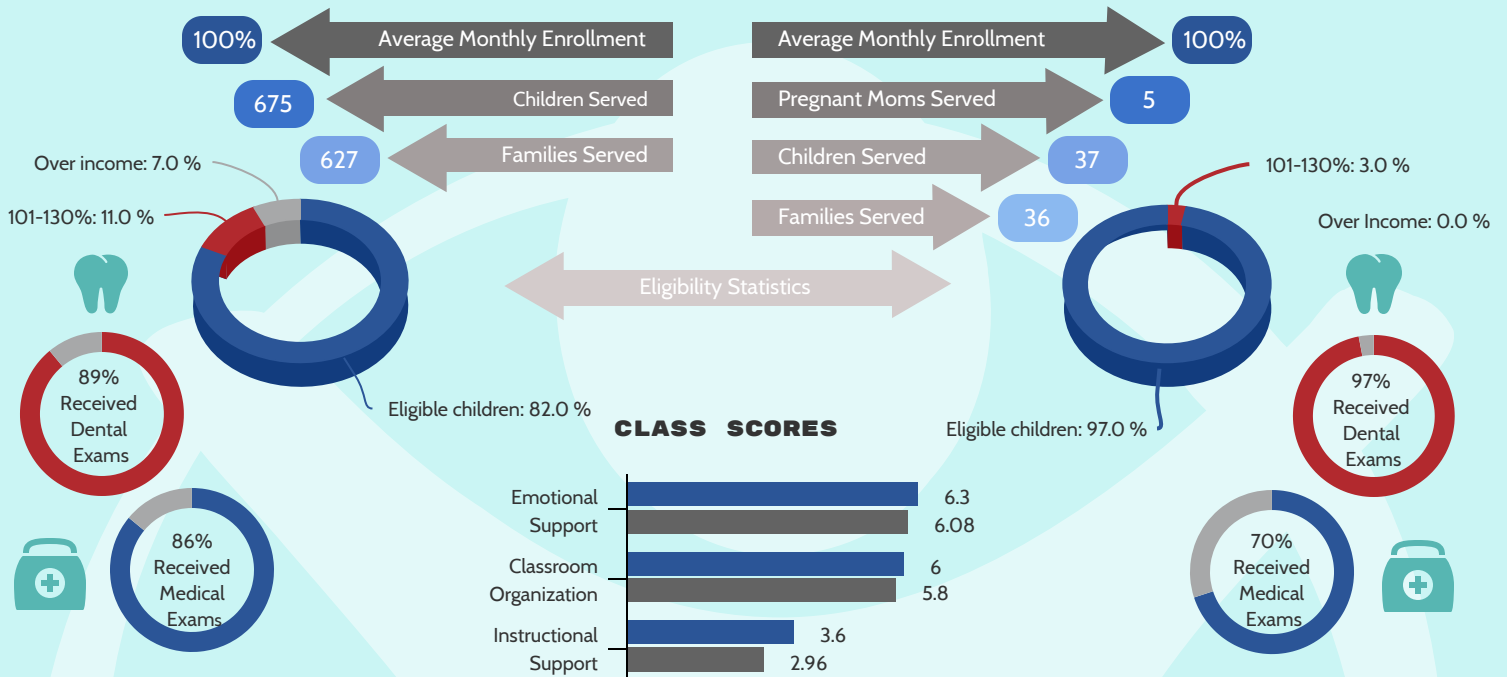
American Indian/Alaska Native	1.4%
Asian	1.6%
Biracial / Multi-Racial	2.6%
Black / African American	1.7%
Native Hawaiian / Pacific Islander	0.3%
White	92.3%
Hispanic or Latinx	18.7%
Non-Hispanic or Latinx	75.7%



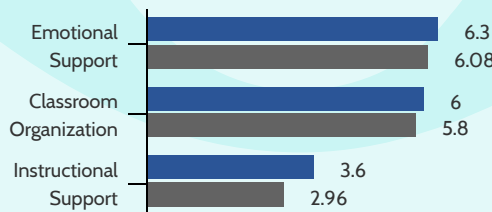
HEAD START & EARLY HEAD START

HEAD START

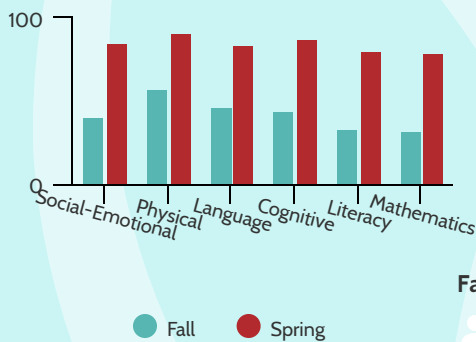
EARLY HEAD START



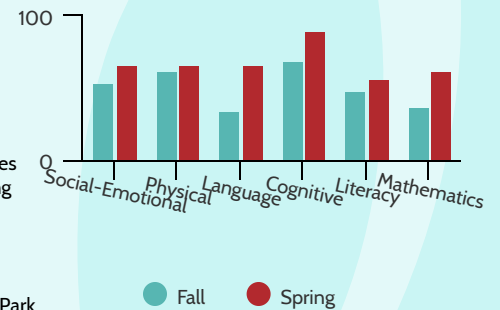
CLASS SCORES



HEAD START OUTCOMES



EARLY HEAD START OUTCOMES



FAMILY ENGAGEMENT

Fatherhood

6 Events
217 Adults attending at least once

Parent Curriculum

Ready Rosie
240 Families Participating

Family Engagement Training

3 Events
182 Adults attending at least once

Family Field Trips

3 Events
1. Dinosaur Park
2. Treehouse Museum
3. Education Adventure

COMMUNITY SUPPORT

CIRCLES

- ★ 23 Decrease in Debt
- ★ 24 Paying debt on schedule
- ★ 22 Improved Employment
- ★ 40 Increased access to Financial Resources

FOOD PANTRY

- ★ 727 Food Boxes Distributed
- ★ 451 Families or 1,499 Individuals Served
- ★ 23,729 Meals Provided
- ★ 455 Referrals Given

EDUCATION & EMPLOYMENT

- ★ 42 Received Education Assistance
- ★ 79 Received Employment Assistance
- ★ 64 Received Transportation Assistance
- ★ 33 Unemployed Individuals obtained Employment

VOLUNTEER INCOME TAX ASSISTANCE

- ★ 1,418 Tax Returns Completed
- ★ \$1,735,824 in Returns Back into Weber County

FINANCIAL EDUCATION

- ★ 414 Attended Financial Education Classes

