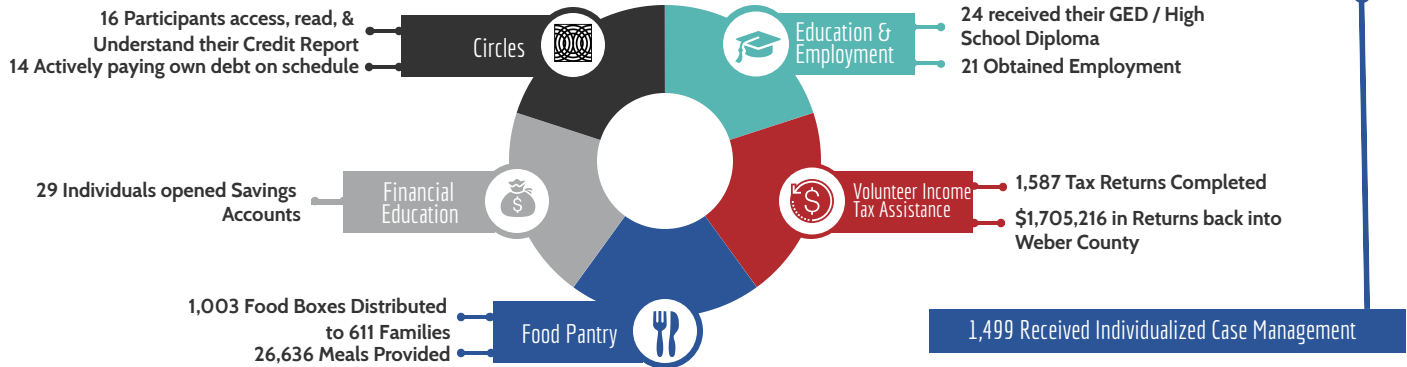
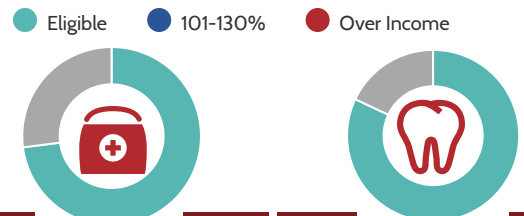
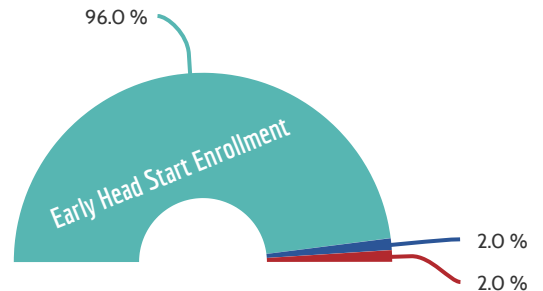
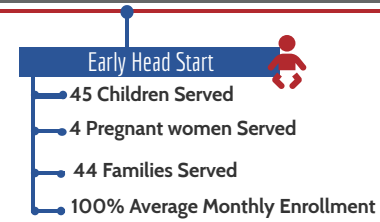
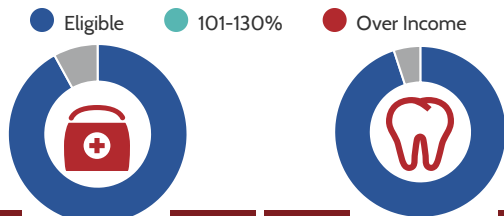
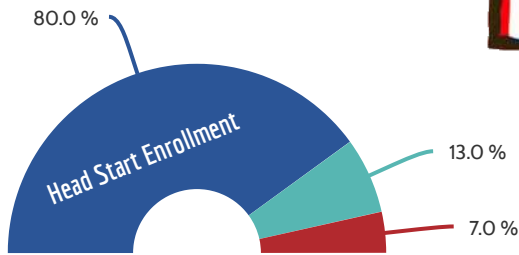
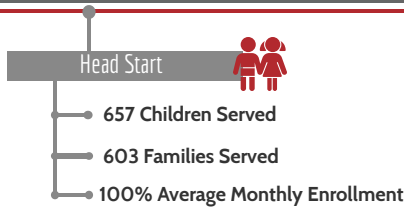




## COMMUNITY SUPPORT



## HEAD START & EARLY HEAD START



## PARENT INVOLVEMENT

6 Fatherhood Events

**Fatherhood**  
189 father figures attended at least one Fatherhood event

5 Family Engagement Trainings

**Family Engagement**  
408 participants attended Family Engagement Meetings / Trainings

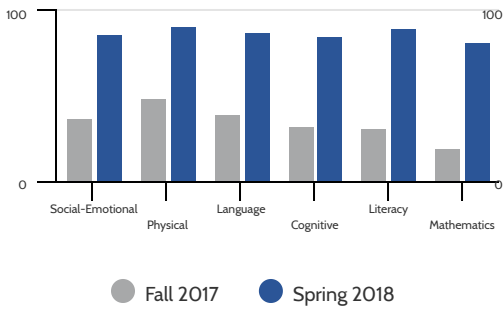
2 Family Field Trips

**Field Trips**  
Dinosaur Park: 501 Attendees  
Treehouse Museum: 450 Attendees

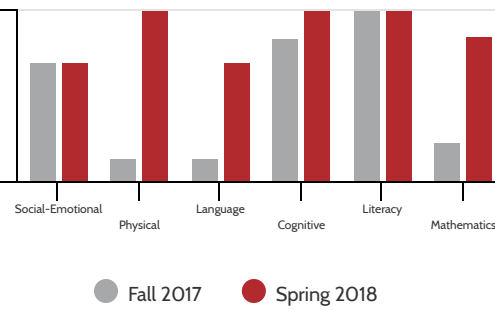
OUR MISSION IS TO DIMINISH THE EFFECTS OF POVERTY IN WEBER COUNTY THROUGH EDUCATION, INDIVIDUALIZED SUPPORT, ADVOCACY, AND COLLABORATION

# SCHOOL READINESS

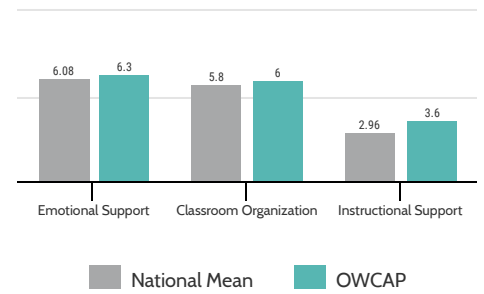
### Head Start Outcomes



### Early Head Start Outcomes



### CLASS Scores



# FINANCES

### FY 2018 Financial Audit



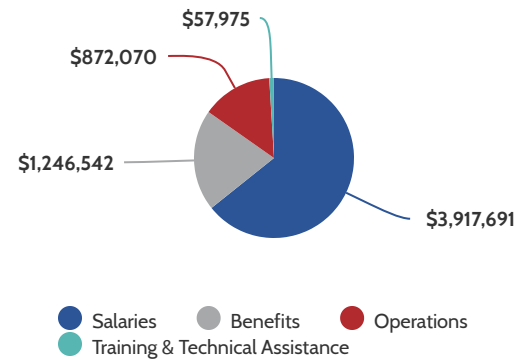
Scan the QR Code to review the FY 2018 Financial Statements Audit



Public Funds Received	
CSBG	\$313,227.00
Head Start	\$6,099,935.00
USDA/CACFP	\$220,779.00
USU	\$6,758.00
CAP Utah	\$19,620.00
TANF Circles	\$177,247.17
TANF Fin Ed	\$69,734.83

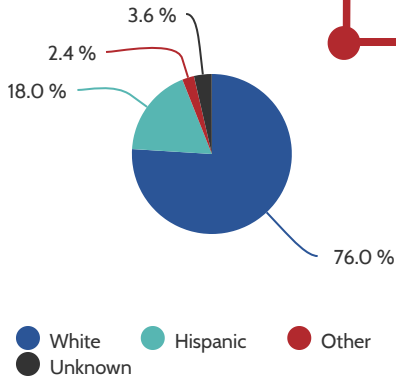
Private Funds Received	
WSU-Family Lit	\$58,890.00
Donations	\$38,505.00
Interest	\$4,317.00
Non-Federal Share	\$1,587,252.30

### 2017-2018 Proposed Head Start Budget



# COMMUNITY DATA

### Weber County Race & Ethnicity

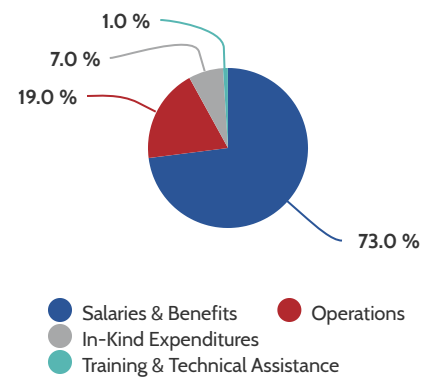


\*Inner-City Ogden has a 32% Hispanic Population

Weber County houses many organizations that partner together to provide services in the areas of Health, Education, Mental Health, Nutrition, Drug Rehab, and Domestic Violence.

- ★ 19,000 Head Start Eligible Children Age 0-5 in Weber County
- ★ 2,767 Expectant Mothers (Up 1.1%) in Weber County
- ★ 15,094 Homeless Children in Utah
- ★ 5 Homeless Shelters in Weber County
- ★ 2,700 Children in Foster Care in Utah
- ★ High School Graduation Rates increased by 1.7%
- ★ There are only 1,786 slots for free or reduced-cost licensed child care options in Weber County, 957 of which are reserved for those with disabilities.

### FY 2018 Head Start Expenditures



### Common Disabilities in Weber County Include:

- Developmental Delay
- Speech/language impairment
- Autism
- Orthopedic Impairment
- Visual Impairment
- Deafness

Increase in underweight children; increase in overweight children, and 15% higher in overweight children in non-white residents of Weber County

★ Low-Income families utilize State programs for Health Insurance Needs